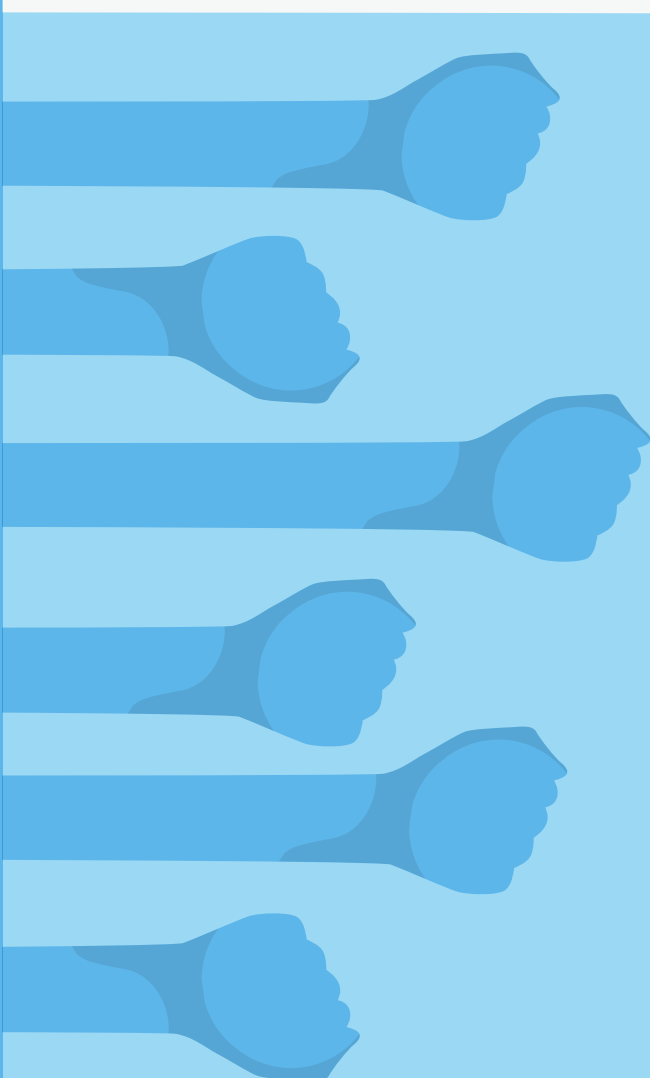


EXTENDING HOPE...



ANNUAL REPORT
20¹⁶/₁₇



OUR VISION

To ensure that no kidney patient will perish because of the lack of funds for dialysis and to find a cure for kidney and kidney-related diseases.

OUR MISSION

To look after the well-being of needy people stricken with end stage kidney disease by nurturing hope and confidence to make their lives more meaningful and to support research that will help prevent, treat and cure kidney and kidney-related diseases.

OUR NICHE

KDF is focused on serving low-income kidney patients in Singapore.



...OUR LIFELONG PROMISE

CONTENTS

1	Message from the Chairman
2	Corporate Information
5	Corporate Governance
7	At a Glance
9	Programmes
10	Holistic Patient Care
11	Clinical Efficacy
13	Patient Profile
15	Patient Subsidy
17	Education outreach
19	Fundraising
21	Donor Recognition
25	Financial Statements

THE ROAD WELL TRAVELLED

February

Kidney Dialysis Foundation (KDF) established

KDF Alexandra centre inaugurated

1996

February

Renal Friends (patient support group) formed

March

KDF website launched

August

Organised State-of-The-Art Nephrology conference

November

Bishan dialysis centre inaugurated

1997

February

First public forum

March

First education seminar for patients

December

Subsidised medication programme launched

1998

2007

July

Ghim Moh centre inaugurated

Peritoneal dialysis centre relocated to Ghim Moh

November

Signed MOU with the NUS to boost research

2008

January

Gene Therapy & Cell Therapy for Diabetes Mellitus project selected to receive funding

2009

July

Portable subsidy programme started

2011

September

Protein supplement programme introduced

October

Kreta Ayer centre and peritoneal dialysis centre inaugurated

2004

November

Launched Share a Life programme to support live donor transplant

2005

February

KDF 10th Anniversary

2006

2012

September

Kreta Ayer centre refurbished

2014

July

Donation boxes revamped

2016

February

KDF 20th Anniversary

November

Conferred Charity Transparency Award

2017

January

Portable subsidy programme for peritoneal dialysis launched

February

Closure of peritoneal dialysis centre

“

Looking back, it has been 21 years since we first started. Yet, our initial guiding principle remains – to focus our service on low-income kidney patients in Singapore.

”

Dr Gordon Ku,
Founder and Chairman



MESSAGE FROM THE CHAIRMAN

Right on the heels of our 20th anniversary, this financial year saw a series of rapid developments at the Kidney Dialysis Foundation (KDF). Firstly, I would like to thank and congratulate the board of directors and staff of KDF for winning the prestigious Charity Transparency Award 2016. It was only possible with tremendous effort taken to ensure good governance and disclosure practices at the Foundation.

Next, I would like to take the opportunity to announce that KDF is now considered to be a large institution of a public character (IPC) based on gross annual receipts. In order to strengthen the management of the Foundation and to take it further into the future, Mdm Chan May Ping, Mr Uantchern Loh and Mr Chan Soo Sen have been appointed to the board of KDF. I firmly believe that they will introduce new ideas and fresh perspectives to further the life-saving mission of KDF.

This year also witnessed the closure of our peritoneal dialysis centre – a regrettable yet necessary decision. With more patients opting for haemodialysis, the number of patients enrolled in the peritoneal dialysis programme continued to fall over the past eight years. In replacement, we launched the peritoneal dialysis portable subsidy programme where we continue to provide subsidies for routine blood tests and solution packages while patients seek medical follow-up at the hospitals.

Additionally, we also piloted a transport subsidy programme to provide selected patients with a transport allowance to support their journey home after dialysis. This is in response to the growing number of frail and elderly patients we serve at KDF. The pilot is well underway and in time we will review the processes and feedback to further improve and possibly expand the programme.

Last but not least, we also put together a public forum last October to educate members of the public about diabetes and how it can lead to kidney failure if



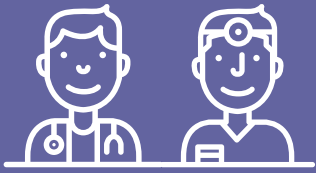
uncontrolled. Talks were also provided to several secondary schools and to residents of the MacPherson community club. This is in line with our belief that prevention is the best way to fight end-stage kidney failure.

Looking back, it has been 21 years since we first started. Yet, our initial guiding principle remains – to focus our service on low-income kidney patients in Singapore. As we gaze into the future, besides maintaining our core service of providing dialysis for the needy, increasing public awareness about the causes of kidney failure by means of education is definitely an area we set our hearts to achieve.

Concurrently, our pursuit for a viable and lasting solution to diabetes must continue, as diabetes remains one of the leading causes of kidney failure locally. Since 2007, KDF has had a long-lasting research agreement with the National University of Singapore in the area of diabetes research. KDF has since devoted a total of \$3.25 million to fund research efforts seeking a cure for diabetes.

As we continue on our journey, I would like to express my deepest gratitude and appreciation to my fellow board members, the staff of KDF, donors, volunteers and supporters for your unyielding support and dedication. Together, let us persist in our efforts to ensure that all needy kidney patients will receive the care that they require and that our pre-emptive efforts will bear fruit in the near future.

Dr Gordon Ku
Founder and Chairman



CORPORATE INFORMATION

BOARD OF DIRECTORS



CHAIRMAN
Dr Gordon Ku



DIRECTOR
Mr Cheng Wai Keung



DIRECTOR
Mr Stephen Lee
Ching Yen



DIRECTOR
Mr Watson Ong



DIRECTOR
Mr Yeoh Oon Jin



DIRECTOR
Mr Wong Yew Meng



DIRECTOR
Dr Lim Cheek Peng



DIRECTOR
Mdm Chan May Ping



DIRECTOR
TREASURER
Mr Uantchern Loh



DIRECTOR
Mr Chan Soo Sen



MEDICAL ADVISORY BOARD



Assoc Prof
Lina Choong Hui Lin



Dr Grace Lee



Prof Woo Keng Thye



Assoc Prof Evan Lee



Dr Stephen Lim



Dr Tan Seng Hoe



RESEARCH ADVISORY BOARD



Prof Yap Hui Kim

Board of Directors

CHAIRMAN

Dr Gordon Ku

01 Feb 1996

Consultant Nephrologist and Physician
Ku Kidney & Medical Centre

DIRECTOR

Mr Cheng Wai Keung

01 Feb 1996

Chairman and Managing Director
Wing Tai Holdings Ltd
Deputy Chairman
Temasek Holdings (Private) Ltd

DIRECTOR

Mr Stephen Lee Ching Yen

01 Feb 1996

Managing Director
Great Malaysia Textile Investments Pte Ltd
Chairman
Singapore Airlines Ltd
Chairman
NTUC Income Insurance Cooperative Ltd

DIRECTOR

Mr Watson Ong

01 Dec 2005

Managing Director
Magnus Mckeever Industries Pte Ltd

DIRECTOR

Mr Yeoh Oon Jin

01 Dec 2005

Executive Chairman, Singapore
PricewaterhouseCoopers LLP

DIRECTOR

Mr Wong Yew Meng

15 Mar 2010

Retired Partner
PricewaterhouseCoopers LLP

DIRECTOR

Dr Lim Cheok Peng

18 Nov 2010

Chairman
Ophir Ventures Sdn Bhd
Chairman
China Medical And Healthcare Group Limited

DIRECTOR

Mdm Chan May Ping

22 June 2016

Former Managing Director
DBS Bank Ltd

DIRECTOR & TREASURER

Mr Uantchern Loh

20 July 2016

CEO, Asia Pacific
Black Sun

DIRECTOR

Mr Chan Soo Sen

10 Oct 2016

Retired Member of Parliament
Chairman
SCP Consultants Pte Ltd

Working Committees

AUDIT COMMITTEE

chairperson

Mr Yeoh Oon Jin

members

Mr Cheng Wai Keung
Mr Stephen Lee Ching Yen

INVESTMENT COMMITTEE

chairperson

Dr Gordon Ku

members

Mr Cheng Wai Keung
Mr Yeoh Oon Jin

FUNDRAISING COMMITTEE

chairperson

Mr Watson Ong

members

Ad-hoc Committee

PROGRAMME SELECTION & REVIEW COMMITTEE

chairperson

Mdm Chan May Ping

members

Mr Watson Ong

HUMAN RESOURCES COMMITTEE

chairperson

Mdm Chan May Ping

member

Mr Watson Ong

TENDER COMMITTEE

chairperson

Assoc Prof Lina Choong Hui Lin

members

Dr Stephen Lim
Mr Watson Ong
Mdm Chan May Ping
Dr Ng Tsun Gun

Medical Advisory Board

CHAIRPERSON AND MEDICAL DIRECTOR

Assoc Prof Lina Choong Hui Lin

Senior Consultant
Department of Renal Medicine
Singapore General Hospital

MEDICAL DIRECTOR - PERITONEAL DIALYSIS

Dr Grace Lee

Consultant Nephrologist
and Physician
Grace Lee Kidney & Medical Centre

MEMBERS

Prof Woo Keng Thye

Emeritus Consultant and Advisor
Department of Renal Medicine
Singapore General Hospital

Assoc Prof Evan Lee

Senior Consultant
Division of Nephrology
National University of Singapore

Dr Gordon Ku

Consultant Nephrologist and Physician
Ku Kidney & Medical Centre

Dr Stephen Lim

Consultant Surgeon and Urologist
Stephen Lim Surgery

Dr Tan Seng Hoe

Consultant Nephrologist and Physician
SH Tan Kidney & Medical Clinic

Mr Watson Ong

Managing Director
Magnus Mckeever Industries Pte Ltd

Research Advisory Board

CHAIRPERSON

Prof Yap Hui Kim

Head and Senior Consultant
Pediatric Nephrology, Dialysis and Renal
Transplantation
National University Hospital

MEMBERS

Assoc Prof Lina Choong Hui Lin

Senior Consultant
Department of Renal Medicine
Singapore General Hospital

Dr Grace Lee

Consultant Nephrologist and Physician
Grace Lee Kidney & Medical Centre

Assoc Prof Evan Lee

Senior Consultant
Division of Nephrology
National University of Singapore

Mr Watson Ong

Managing Director
Magnus Mckeever Industries Pte Ltd

KDF-NUS Kidney Research Fund - Review & Selection Committee

CHAIRMAN

A/Prof George Yip Wai Cheong

Assistant Dean (Grants)
NUHS Research Office

MEMBERS

Prof A Vathsala

Head Division of Nephrology
National University Hospital

Prof Saw Seang Mei

Vice Dean (Research)



CORPORATE INFORMATION

Visiting Doctors

A/Prof Lina Choong Hui Lin
A/Prof Tan Han Khim
Dr Grace Lee
Dr Htay Htay
Dr Kwek Jia Liang
Dr Manish Kaushik
Dr Marjorie Foo Wai Yin
(left 01 Jun 2016)

Dr Ng Tsun Gun
Dr Pwee Hock Swee
Dr Sobhana D/O Thangaraju
Dr Stephen Chew
Dr Tan Seng Hoe
Dr Teo Su Hooi
Dr Timothy Koh
Dr Titus Lau
(left 01 Feb 2017)

Dr Tok Pei Loo
Dr Wong Jiunn
Dr Yeoh Lee Ying

Management Team

GENERAL MANAGER
Mr James Ong

ADMIN & HUMAN
RESOURCE MANAGER
Mrs Lily Quan

DONOR RELATIONS
& COMMUNICATIONS
MANAGER
Ms Jemin Chua

FINANCE MANAGER
Mr Edwin Lee

NURSE MANAGER
Ms Lay Kwee Chin

Other Office Bearers

LEGAL ADVISORS
Ms Angela Wong
Mr John Tan

SECRETARY
Mrs Goh Boon Kok

Auditors

EXTERNAL AUDITOR
KPMG LLP

INDEPENDENT INTERNAL
AUDITOR
Shared Services for
Charities Limited

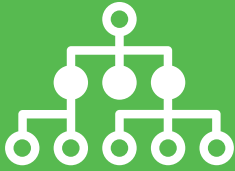
REGISTRATION DETAILS

KDF is a company limited by guarantee. It is registered as a charity under the Charities Act 1994 and is governed and monitored by our Charity Sector Administrator, the Ministry of Health on behalf of the Commissioner of Charities.

Charity Registration No. 1156
dated 22 February 1996
Company Registration No.
199600830Z
GST Registration No.
19-9600830-Z
IPC Registration No HEF0021/G
(Status renewed up to 29
October 2018)

REGISTERED OFFICE

Block 333 Kreta Ayer Road
#03-33
Singapore 080333



CORPORATE GOVERNANCE

MANAGEMENT POLICY

Since its inception, KDF has implemented a number of policies to ensure transparency and that donations received are utilised directly to fulfil the mission of the Foundation and not for costly overheads. A fixed-cost subcontracting system allows for this to be possible.

ALLOCATION AND EXPENDITURE

The total expenditure incurred in the recently concluded financial year was \$7.96 million, 79% of which was utilised on dialysis services. KDF remains committed to channelling a large portion of funds received into patient care by keeping money spent on publicity, fundraising and administration to a minimum.

FUNDRAISING RATIO

The Charities (Fund-Raising Appeals) Regulations (Charities Act 37) requires that the total fundraising expenses of the charity do not exceed 30% of the total gross receipts from fundraising and sponsorships for that year. For FY16/17, KDF's overall fundraising expenses ratio was 15.1%.

POLICY ON RESERVES

KDF has a reserve policy to provide clarity on the Foundation's management of its reserves. The policy applies to that part of the Foundation's income funds that are freely available for its operating purposes. It excludes endowment funds, restricted funds and designated funds.

As at 31 March 2017, assuming KDF receives no income at all, the accumulated surplus would enable KDF to sustain the cost base of FY16/17 for 3.6 years. As dialysis treatment is a long term commitment, it is the intention of the board of directors to ensure that the level of reserves is adequate to support KDF's programmes for its needy patients during their lifetime and fulfil its commitment to education and research.

INTERNAL CONTROLS AND AUDITS

An independent third party commissioned by the board conducts annual internal audits to ensure that the operations of the Foundation is in compliance with the established guidelines and regulations set by the commissioner of charities, sector administrator and relevant government bodies. They also ensure that the Foundation adopts best practices recommended for the charity sector. For FY16/17, Shared Services for Charities Limited was appointed as KDF's independent internal auditor to review processes and controls within the Foundation.

CONFLICT OF INTEREST

KDF has policies in place to prevent and address actual and perceived conflict of interest that will affect the integrity, fairness and accountability of the Foundation. These policies are clearly stated in the Foundation's Code of Governance and Conduct, and are adopted by the Foundation,

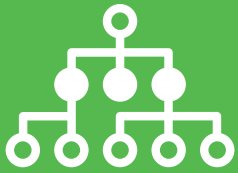
board members and staff. In situations where a potential conflict of interest should arise, the board will evaluate the situation and the affected party will abstain from voting on the transaction. For this financial year, the Chairman, board members and staff have declared that they do not have any personal interest in the business transactions or contracts that KDF has entered into.

FRAUD DETECTION AND REPORTING

KDF maintains a zero tolerance policy towards fraud. This policy applies to members of the board, committee members, staff, volunteers and also to the Foundation's vendors, suppliers and partners, to the extent that the Foundation's resources or reputation may be involved or affected.

WHISTLEBLOWING POLICY

KDF has in place a whistleblowing policy that is made known to all staff of the Foundation. The policy ensures that there are proper avenues for employees to raise concerns about actual or suspected improprieties and that all reports are taken seriously and investigated accordingly.



CORPORATE GOVERNANCE

DISCLOSURE AND TRANSPARENCY

KDF is in full compliance with the 'Governance Evaluation Checklist' listed on the Charity Portal (www.charities.gov.sg). The Foundation's financial statements are also available for scrutiny on its website. In recognition of its exemplary disclosure practices, KDF was awarded the Charity Transparency Award 2016 by the Charity Council.

TOP EXECUTIVE ANNUAL REMUNERATION

Key management personnel of the Foundation are the people having the authority and responsibility for planning, directing and controlling the activities of the Foundation. The directors and general manager are considered key management personnel.

The directors of the Foundation render their services on a voluntary basis and do not receive any remuneration. However, the general manager receives a remuneration that is approved by the board of directors. For FY16/17, only one employee of the Foundation received an annual remuneration of above \$100,000.

Salary Range	Number of Executives
\$100,001 - \$150,000	1

Table 1: Top Executive Remuneration for FY16/17

BOARD MEETINGS AND ATTENDANCE

The KDF board of directors convened twice in the recently concluded financial year. Attendance of the meetings are as reflected below.

Board Member	Designation	Attendance	
		Jul	Nov
Dr Gordon Ku	Chairman	√	√
Mr Cheng Wai Keung	Director	√	X
Mr Stephen Lee Ching Yen	Director	X	X
Mr Yeoh Oon Jin	Director	√	√
Mr Watson Ong	Director	√	√
Mr Wong Yew Meng	Director	√	X
Dr Lim Cheok Peng	Director	√	X
Mdm Chan May Ping	Director	√	√
Mr Uantchern Loh	Treasurer	N.A.	√
Mr Chan Soo Sen	Director	N.A.	X
A/Prof Lina Choong	Medical Director	√	√
Dr Grace Lee	Medical Director	√	√

Table 2: Board meeting attendance for FY16/17

BOARD RENEWAL

Three new directors were appointed to the KDF board in FY16/17. Of the current directors, five have served on the KDF board for more than ten consecutive years. They include Dr Gordon Ku, Mr Cheng Wai Keung and Mr Stephen Lee Ching Yen, who are founding members of the Foundation. Reappointment of the five long serving directors was based on their subject matter expertise and experience managing the Foundation and their understanding of the charity sector and its related legislation in Singapore. It has also been a challenge to attract and recruit new directors on board.



AT A GLANCE

42

PATIENTS RECEIVED



TRANSPORT SUBSIDY

6

HEALTH TALKS CONDUCTED



CHARITY TRANSPARENCY AWARD 2016

79%

OF TOTAL EXPENSES SPENT ON PATIENT TREATMENT



800

VOLUNTEERS FOR FLAG DAY 2016



TOTAL DISTANCE COVERED BY

67

CYCLISTS DURING KDF MILLENNIUM RIDE 2017

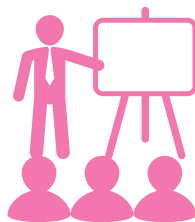
1.5x


AROUND THE WORLD



600

REACHED DURING KDF PUBLIC FORUM



A photograph of an elderly woman with dark hair, wearing a white hospital gown, lying in a red hospital bed. She is looking towards the right of the frame with a slight smile. In the background, there is a blue medical machine with various tubes and a white container. The scene is set in a clinical environment.

Life is all about perspectives, you can choose to look at the negatives or you can appreciate simple pleasures and live in the moment. There is always someone needier and in a worse off situation no matter how little you have. But I am deeply grateful to the donors who help defray our dialysis costs as the thought of having to pay the full cost of dialysis would cause patients like me great anxiety and some might resort to skipping treatment to save money.

Mdm Ruhaya, KDF patient since 2008



PROGRAMMES

KDF's core service is providing subsidised dialysis to needy patients who cannot afford to seek treatment elsewhere due to financial circumstances. Other programmes such as our medication subsidy, transport subsidy and the adopt-a-patient programme compliment this core service to create a holistic continuum of care for our patients.

SUBSIDISED DIALYSIS PROGRAMME

KDF operates three haemodialysis centres located at Bishan, Chim Moh and Chinatown, with a combined patient capacity of 318. KDF focuses our service on the lower-income group in Singapore and subsidies are granted according to patients' financial situation upon means testing. For FY16/17, a total of \$6.28million, amounting to 79% of KDF's total expenditure was spent on dialysis and auxiliary services.

PORTABLE SUBSIDY FOR PERITONEAL DIALYSIS (PD)

For patients on peritoneal dialysis, KDF offers subsidies for routine blood tests and solution packages. This programme was introduced in January 2017 with the aim of making financial aid available to needy patients who choose to undergo peritoneal dialysis. With the closure of the KDF PD centre in February, all affected patients were transferred to this programme.

PORTABLE SUBSIDY PROGRAMME

For high dependency haemodialysis patients who are unable to receive treatment at KDF dialysis centres due to their complex medical condition but are in need of financial assistance, this



programme enables them to dialyse in a suitable medical environment while benefitting from KDF subsidies.

SUBSIDISED MEDICATION PROGRAMME

Running hand in hand with our dialysis programmes, KDF also provides subsidies for medication often required by dialysis patients. The following medication is covered under this programme: Erythropoietin Injection (EPO), Calcijex, Venofer, Lanthanum Carbonate, Cinacalcet, Hepatitis Vaccination and Zemplar. Supplemental feeds for protein are also provided to patients at a highly subsidised rate.

ADOPT-A-PATIENT PROGRAMME

Patients unable to afford the co-payment portion of their fees due to debilitating financial difficulties are taken into this programme where they receive a second tier subsidy. This significantly reduces, and in some cases eliminate the out-of-pocket expenses for these patients.

TRANSPORT SUBSIDY PROGRAMME

To cater to the growing number of frail and elderly patients at KDF, the transport subsidy programme was launched in November 2016 to provide patients with a transport allowance to support their journey home after dialysis. The first group of 42 patients who benefited from this programme are those with mobility issues or have moderate to high fall risk.





HOLISTIC PATIENT CARE



A holistic approach towards patient care is adopted by KDF, encompassing quality treatment, regular reviews, continuous education, and addressing psychosocial needs.

PATIENT ORIENTATION AND EDUCATION

Upon entering the programme, all new patients are educated on their treatment and the dialysis process by nursing personnel. A patient handbook comprising all the necessary information is distributed to all patients. On a periodic basis, patients are also educated by the primary nurse and dietician on their medication and dietary compliance.

CLINICAL CARE AND REGULAR REVIEWS

KDF dialysis centres are supported by a group of nephrologists from restructured hospitals and the private sector. These centres are operated by a team of nurses from external service providers who manage our patients in accordance with the medical and nursing guidelines and protocols established by KDF. Medical reviews of patients are conducted monthly and arrangements are made with family physicians working in the vicinity for urgent medical cover should the need arise.

PSYCHOSOCIAL SUPPORT

To facilitate continuous learning and create opportunities for socialising and mutual bonding, Renal Friends, a patient support group for all kidney patients and their families, was formed in 1997. The group organises at least two events yearly, with the aim of enabling patients and their families to interact with one another and also to gain the necessary knowledge to take better care of themselves.

PATIENT EDUCATION SEMINAR AND OUTING TO SINGAPORE FLYER (APRIL 2016)

On 24th April 2016, Dr Yeoh Lee Ying, senior consultant at Khoo Teck Puat Hospital, was invited to speak to our patients on how to better understand their blood test results. She highlighted the causes of inadequate dialysis, malnutrition, and provided tips on how to maintain a balanced and healthy lifestyle. After the seminar, patients and their caregivers were treated to a breathtaking sight of Singapore, at 165m from the ground on board the Singapore Flyer.

PATIENT EDUCATION SEMINAR AND OUTING TO BOLLYWOOD VEGGIES (NOVEMBER 2016)

The second Renal Friends event for the year took place on 20th November 2016 and focused on heart diseases. Conducted by Dr Wong Jiunn, consultant nephrologist from the Singapore General Hospital, the seminar introduced heart-related diseases, its risk factors, how kidney disease is closely related to cardiovascular disease and what to do if diagnosed. Following the seminar was an outing to Bollywood Veggies, where patients were taken on a farm tour where they got to touch, smell and taste some of the vegetables, spices, herbs and fruits grown on the farm.





CLINICAL EFFICACY

Patient care remains central to KDF operations. Procedures and standards have been put in place to ensure high quality service delivery across KDF dialysis centres and encourage the continual education of our nurses.

IN-SERVICE EDUCATION

Nursing is subjected to rapid changes in healthcare provision, hence in-service education serves as an opportunity for nurses to maintain their competencies and keep abreast of the latest developments in nursing care. Nursing related in-service education is regulated by the Singapore Nursing Board which awards 'Continuing Professional Education' (CPE) points for participants. This counts to their renewal of practising certificates. For FY 16/17, KDF conducted seven CPE accredited in-service education sessions and three medical equipment related in-service training for our nurses.

CONTINUOUS QUALITY IMPROVEMENT

Under the guidance of the KDF medical director, a team comprising of the charge nurse of the dialysis centres and KDF nursing personnel continues to monitor the indicators of dialysis adequacy (KT/V) to achieve a level of 1.2 or greater. In 2016, a new initiative was started to monitor nutritional performance indicators such as albumin, potassium and phosphate levels in our patients.

STAFF COMPETENCY CHECK

Annually, a competency check on dialysis procedures is conducted on centre nursing staff in collaboration with the charge nurse of each centre. This ensures that the standards of practice across all KDF dialysis centres are maintained according to our nursing protocol and guidelines.

INFECTION CONTROL AUDIT

An audit of the infection control practices at KDF dialysis centres is also conducted twice a year by KDF nursing personnel and the centre infection control staff nurse. This ensures that patients receive a high standard of care in a safe environment, according to KDF medical and nursing standards. This helps to reduce the incidence of infection, thereby increasing patient and staff safety.



CLINICAL DRILLS

Medical emergencies which could occur in the dialysis setting include cardiac arrest, air embolism, suspected pyrogenic reactions, profound hypotension or hypertension and significant blood loss. Clinical drills for such medical emergencies are conducted annually at KDF dialysis centres to ensure that all nursing staff are adequately prepared to recognise and respond to emergent patient medical conditions.

GLUCOSE MONITORING

All registered nurses at KDF dialysis centres are certified to be proficient in the use of a glucometer to monitor patients' blood glucose level. They are trained on how to assess and react when there are complications. An annual recertification test on glucose monitoring is conducted by the centre charge nurse to maintain staff competency.

INTRAVENOUS ADMINISTRATION OF MEDICINES

A recertification on the administration of specific intravenous medicines for all registered nurses at our dialysis centres is conducted yearly by KDF nursing personnel and endorsed by our medical director. For FY16/17, pharmacist Dr Lou Hwei Xin provided IV training on pharmacology for registered nurses followed by a recertification exercise. A register of the approved staff for administering intravenous medication is kept by KDF nursing personnel and the charge nurse of the dialysis centres.



I still vividly remember my first dialysis session; I felt powerless and was not comfortable with the needles poking my body. Dialysis treatment is really tough, we go through a total of three sessions every week with each session lasting for four hours! Luckily the care we receive at KDF is very good and I am very happy here.

Mr Ng Kim Gow, KDF patient since 2014



PATIENT PROFILE

KDF started with a clear vision – to provide quality dialysis treatment to low-income patients who otherwise cannot afford it. Patients are typically referred by medical social workers and are subjected to means testing. KDF generally only accepts patients whose monthly per capita income falls below \$1,800.

To date, the Foundation has served more than 849 patients, 79 of which have gained a new lease of life through a kidney transplant.

PATIENT STATISTICS

As at 31 March 2017, our total patient count stood at 266, with 91% of patients opting for haemodialysis (HD) [Figure 1].

In light of no new patient admissions and attrition of patients for peritoneal dialysis (PD) over the past years, the KDF board of directors decided to cease operations of the KDF Peritoneal Dialysis Centre with effect from 1 February 2017. All affected patients now receive a portable subsidy from KDF for their treatment and laboratory tests.

AGE

Elderly patients (above 60 years old) form the largest segment of patients served at KDF, followed by those in the middle age group (41 – 60 years old). As at 31 March 2017, 51% of KDF patients were elderly and 44% were middle-aged, with only 5% under the ages of 40 [Figure 2].

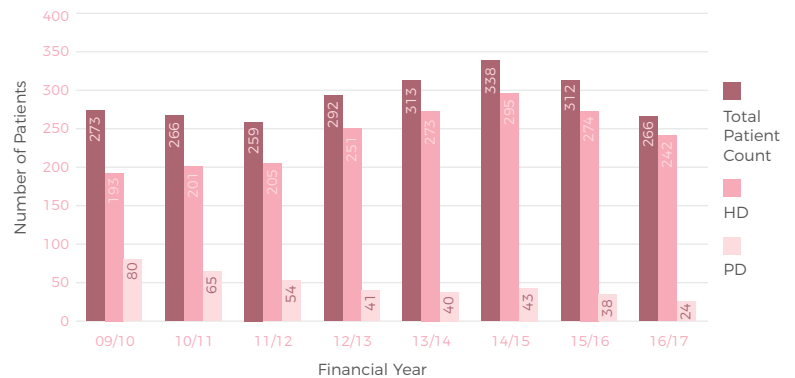


Figure 1: Distribution of patients according to treatment type.

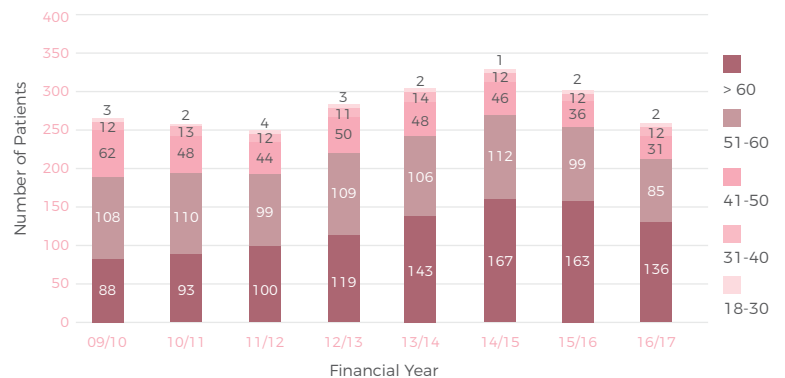


Figure 2: Distribution of patients according to age.



PATIENT PROFILE

GENDER AND RACE

Gender distribution is fairly equal with female patients accounting for 52%. In terms of racial composition, more than half of the patients at KDF are Chinese, while Malay patients form close to a quarter of the total patient population [Figure 3 & 4].

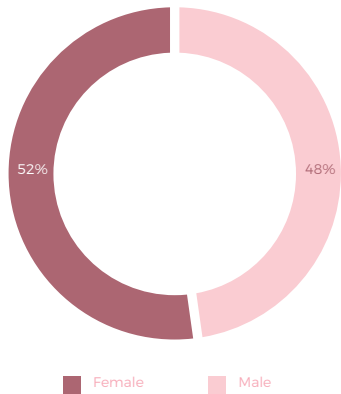


Figure 3: Distribution of patients according to gender.

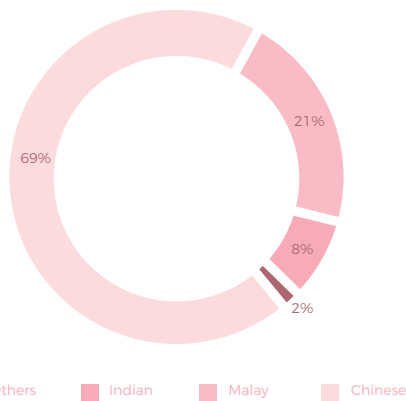


Figure 4: Distribution of patients according to race.

EMPLOYMENT STATUS AND RESIDENCE TYPE

Only a third of KDF patients are employed with the rest either retired, homemakers or unable to find employment. Those employed are mostly blue-collar workers such as security guards, drivers, cleaners or general workers [Figure 5].

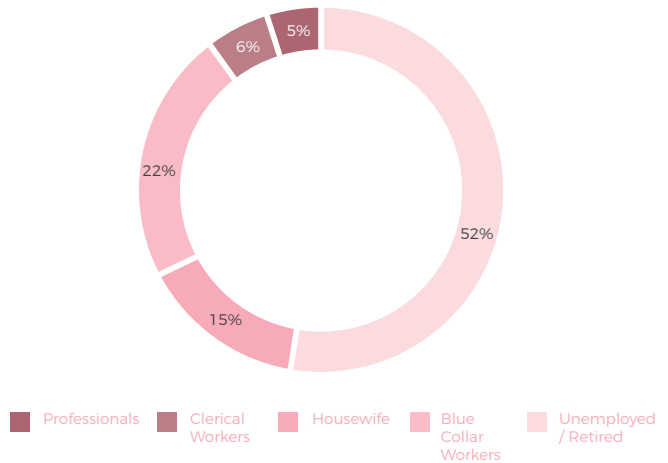


Figure 5: Distribution of patients according to employment type.

While the majority of KDF patients live in 3 or 4-room HDB flats, 27% of them live in rental flats or with their families [Figure 6].

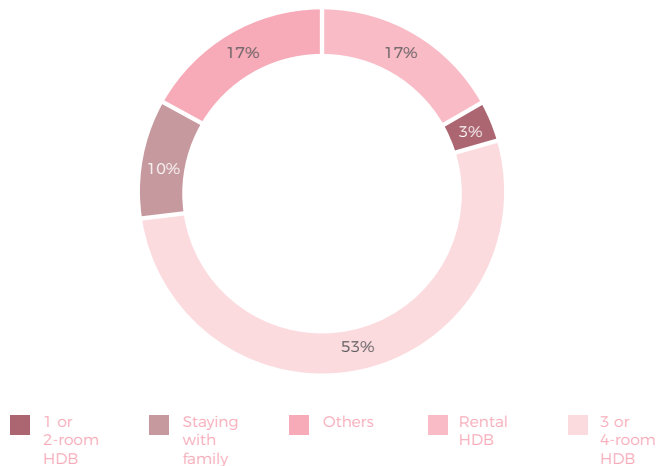


Figure 6: Distribution of patients according to residential type.



PATIENT SUBSIDY

PATIENT SUBSIDY

KDF patients receive subsidies of varying amounts for their dialysis treatment depending on their household income. For treatment which could cost over \$2,000 monthly at private dialysis centres, 94% of KDF patients paid \$400 or less, while 36% of patients did not have to pay any out-of-pocket expenses.

Patient Out-of-Pocket Expenses	Patient Count		Total	Percentage
	HD	PD		
\$0	90	6	96	36%
\$1-\$200	96	12	108	41%
\$201-\$400	40	6	46	17%
\$401-\$600	15	0	15	6%
\$601-\$800	1	0	1	0%
Above \$800	0	0	0	0%
Total	242	24	266	100%

Table 3: Patient out-of-pocket expenses for dialysis treatments

Based on means testing criteria set by the Ministry of Health (MOH), 91% of KDF patients qualified to receive government subsidies. The table below reflects the number of KDF patients who fall under the various income bands under the MOH means test.

Monthly Per Capita Income	Patient Count	
	HD	PD
\$0-700	113	11
\$701 - 1,100	48	6
\$1,101 -1,600	34	3
\$1,601 -1,800	14	1
\$1,801 - 2,600	21	1
Above \$2,600	12	2
Total	242	24

Table 4: Patient per capita income based on MOH means test



My husband and I live in a one-room flat. We do not have children; it's just the two of us. He used to work as a HDB block cleaner until quite recently as his eyesight is no good now and his legs are very weak. I let him accompany me for my dialysis sessions as I am worried to leave him alone at home. We don't like to bother others so we already applied and are now waiting to get into a nursing home. But for now, I am still getting my dialysis at KDF and I am thankful for donors who have lent a helping hand to patients like me, so we continue to be by the side of our loved ones.

Chua Ah Huay, KDF patient since 2009



EDUCATION OUTREACH

KDF strongly believes in upstream preventive education and is dedicated to increasing public awareness of kidney and kidney-related diseases.



HEALTH BROCHURES

KDF publishes our own range of health brochures which covers a wide spectrum of topics relating to kidney health from general information about the kidneys to diseases associated with kidney failure. Targeted brochures such as dietary management and a travelling guide for dialysis patients are also available. These brochures are free and available at KDF dialysis centres, private clinics, hospitals, and accessible from the KDF website.

HEALTH TALKS

KDF offers free health talks for companies, schools and community groups. These educational talks allow attendees to learn more about the functions of the kidneys, kidney failure and dialysis treatment options from specialists and clinical nurses. Other topics offered include kidney-related conditions such as hypertension and diabetes. For the financial year, health talks were conducted for five secondary schools and one community club.

PUBLIC FORUM

Held on 15 October 2016 at Singapore Expo Max Atria, the KDF Public Forum 2016 engaged over 600 members of the public in an in-depth lecture on 'How to Avoid Kidney Failure in Diabetes Patients'. A panel of senior doctors, researchers, and a senior dietician were invited to share their knowledge on the subject matter

with event attendees. A health exhibition zone was also set up outside the hall where basic health checks and podiatric screening were offered to attendees for free.

COMMUNITY OUTREACH

Over the National Day weekend, KDF also participated in a community outreach event at the Singapore Expo PlayLah Carnival held from 5 to 9 August 2016. Our booth featured a haemodialysis machine and a peritoneal dialysis set-up, complimented with educational materials on kidney failure and its treatment options. This was done in collaboration with our medical partner, Fresenius Medical Care, who brought in the dialysis machines and offered free blood pressure checks for attendees.





“You can only give what you have. Why not invest your time and talent to raise more funds than what you can come out with from your own pocket?”

This was what a late friend told me and what motivated me to form the ‘Epic Cyclist’ group. What I set out to create was a unique charity ride in Singapore that would be challenging for cyclists, whom themselves would play a part in fundraising. With that achieved, I hope for the KDF Millennium Ride to be sustainable and known as the longest annual charity ride in Singapore.

Mr Clifford Lee, Founder of Epic Cyclist and co-organiser of KDF Millennium Ride





FUNDRAISING



Events & Projects

CHARITY NETBALL 2016

KDF held our second netball fundraising event on 2nd April at Kallang Netball Centre, attracting a total of 30 netball teams. The event presented a unique opportunity to reach out to the student population to promote an active lifestyle and increase awareness of kidney-related diseases among youths. A total of \$114,185 was raised from the event with support from Meiji, OUE, Singapore Totalisator Board and other local charitable Foundations among others.

FLAG DAY 2016

KDF's annual Flag Day was held on 23rd July 2016. The event attracted more than 800 volunteers from various schools, corporates and members of the public. With their combined efforts, a total of \$52,094 was raised from Flag Day 2016 including donations received from internal collections and outright donations. Dennis Wee Group and Ang Mo Kio Secondary School were the top fundraisers within the corporate and school category respectively.

CHARITY WEIQI COMPETITION 2016

Singapore's first-ever charity Weiqi competition organised by KDF and the Singapore Weiqi Association took place on 12th and 13th of November 2016 at MacPherson community club. The event attracted 300 local and international Weiqi players to compete in nine game categories and was graced by 8-dan Korean master, Mr Kwon Kapyoung, as the event's guest-of-honour. The event raised over \$150,885.

MILLENNIUM RIDE 2017

Into its fourth year, the KDF Millennium Ride was held from 3rd to 6th March 2017 in celebration of World Kidney Day. A team of 67 cyclists participated in this charity event including cyclists from Bangladesh, China and Malaysia. The thousand kilometer journey began in Belum, northern Malaysia, passing through

Gua Musang, Kuala Lumpur and Muar before ending in Singapore. A total of \$373,875 was raised through this event, including support from AETOS, Aleoca, Delfi Limited, Hue Floresta, Quest Laboratories, Stephen Riady Foundation and STIHL among many others.

DONATION BOX

For the fiscal year, KDF's partners for the donation box project include Killiney Kopitiam, Kim San Leng (F&B) Group, S-11 F&B Holdings Pte Ltd, and many other independent retailers. Presently, more than 50 donation boxes can be found all over Singapore, only made possible by partnerships with retail outlet owners. A total of \$13,154 was raised from this project this year.

MACHINE AND CENTRE SPONSORSHIP

Annually, KDF receives donations to support the running of our dialysis centres and for the purchase of dialysis machines and medical equipment. This fiscal year, a total of \$60,600 was raised from machine and equipment-related donations.

Additionally, \$356,179 was received from devotees and members of the San Wang Wu Ti Religious Society to cover operational costs of our San Wang Wu Ti dialysis centre located in Chinatown.

CALENDAR & PLANNER 2017

The KDF charity calendar and planner for 2017 was conceptualised and created by three third-year students from the Singapore Polytechnic Design School. The fruit of their labour is an A5 size planner which functions as a calendar and a notebook. Besides spectacular landscapes, it is also the first time KDF patients, staff, volunteers and doctors are featured on our charity merchandise. The planners and calendars were sold to the public and given to major donors.



FUNDRAISING



Fundraising Sub Committee

CHINESE COMMUNITY COMMITTEE

The Chinese Community Committee (CCC) is a special fundraising committee overseen by the KDF fundraising director and comprises of adult volunteers from all walks of life, many of whom are influential figures within the local community. The committee is primarily responsible for KDF's fundraising efforts during the lunar seventh month.

Since the committee was officially formed in 2003, past and present members of the committee have dedicated their time, resources and personal networks to build and strengthen KDF's ties with the local Chinese community with the aim of raising funds for needy patients at KDF.

CORE COMMITTEE MEMBERS (FY16/17)

Mr Ong Lian Kwang (翁两光)
Mr Lawrence Lim (林胜来)
Mr Tony Tan (陈汉钦)
Mr Peter Sng (孙财安)
Mr David Lim (林绍光)
Mr Tong Lee Song (董理松)
Mr Albert Seah (余汉宽)
Mr Francis Yap (叶世品)
Mr Ron Chan (陈天文)

LUNAR SEVENTH MONTH FUNDRAISING

Organised by the Chinese Community Committee, KDF's annual charity icon launching ceremony and appreciation dinner was held on 16th July 2016. More than 600 guests attended the dinner including Guest-of-Honour, Member of Parliament Ms Tin Pei Ling.

In addition to the dinner, the lunar seventh month is also a notable month for KDF as funds are raised through table to table solicitation and the auctioning of KDF charity icons at different dinner sites. A grand total of \$344,307 was raised from the charity dinner and lunar seventh month fundraising activities for the year.

Third Party Projects

Aside from our regular staple of fundraising events and projects, KDF was also fortunate to have been selected by various groups and organisations as a beneficiary for their events. KDF is honoured to have benefited from the following third party projects:

Event	Amount Raised
President's Challenge 2016	\$130,000
Raffles Charity Day 2016	\$19,000
Singapore Chinese Girls School	\$1,046
Anglo-Chinese School (Independent): Foreign Currency Collection Drive	\$601

Table 5: Third Party Projects for FY 16/17

Volunteers

Volunteer visits to the dialysis centres often bring much cheer and life to the usually quiet environment. Patients also benefit from these social interactions while undergoing treatment. This year, we were visited by various groups and organisations including Epic Cyclists, Holy Innocents' High School, Ping Yi Secondary School, Poh Teck Siang Tng, UCare Volunteers and UPS Singapore. In fact, UCare Volunteers have adopted our San Wang Wu Ti dialysis centre to conduct monthly visits on Saturday where they distribute packed food and interact with our patients.





DONOR RECOGNITION

\$80,000 and above

Wing Tai Foundation

\$40,000 to \$79,999

Estate of Mr Tan Tuan Hock @ Tan Hwa Sin

Singapore Totalisator Board

The Community Foundation of Singapore

Lee Ying

\$10,000 to \$39,999

AM Aerospace Supplies Pte Ltd

Aranda Investments Pte Ltd

Buddha Tooth Relic Temple

ConocoPhillips Asia Ventures Pte Ltd

Delfi Limited (Petra Foods Limited)

E Combi Pte Ltd

E Combi Services Pte Ltd

Fu Lu Shou Si Mian Fo Pte Ltd

Hock Hwa Casket

Hong Leong Foundation

Li Teck Chuan Cin Tong

Liang Chuan Pte Ltd

Local Engineering Pte Ltd

Lubritrade Distribution Pte Ltd

MPS Trading Pte Ltd

SymAsia Singapore Fund

The Grace, Shua and Jacob Ballas Charitable Trust

The Shaw Foundation Pte

THK Powertools (S) Pte Ltd

Thong Teck Co (2011) Pte Ltd

Wah Seong Press

Chan Wing To

Chong Siew Hong

Chris Tew Boon Pin

Chuang Tiong Liep

Frederick Benjamin Koh

Kwok Yew Kai Colin

Lee Chin Cheng

Lee Soek Shen

Leon Emil Le Mercier

Lim Boon Eng Julie

Lim Him Chuan

Lim Siah Mong

Loke Wai Yin

Low Hwee Chua

Low Kia Min

Ng Tiong Sun

Oan Chim Seng

Quek Chong Hwee

Quek Koh Kheng

Quek Rui Song

Quek Tong Soon

Quek-Chua Bin Hwee

Sia Poh Lan

Tang Oh Nga

Tay Siew Lang

Teo Hark Piang

Wang Chan Foo

Wong Yee Lih

Yeo Ah Yeng

Yeo Hee Chong Eric

Zhang Wei Sheng

Zung Bei Fan Ronald

\$5,000 to \$9,999

Aedge Holdings Pte Ltd

Aetos Security Management Pte Ltd

Builders 72 Pte Ltd

Eliza Lim Beauty & Fashion House

Ghim Moh Market & Shop Merchants Association

ICA Recreation Club (ICARE)

Imperial Treasure Restaurant Group Pte Ltd

Kim Seng Heng Engineering Construction Pte Ltd

Kram Industries Pte Ltd

Lee Foundation Singapore

Mighty Engineering & Construction Pte Ltd

Peck Brothers Construction Pte Ltd

Pei Hwa Foundation Ltd

Roche Singapore Pte Ltd

RSM Chio Lim LLP

Sunny Ocean Pte Ltd

Tan Chin Tuan Foundation

Thomson Shin Min Foundation

Toa Payoh Lor 8 Multi Storey Factory LSM Organising Committee

Yong Khian Pte Ltd

A Ilancheran

Amy Hsui Mei Liaw Tan

Cheng Jian Fenn

Cheong Lay Kheng

Chung Chun Yee John

Eapen K Mathew Latha

Fong Kok Wai

Goh Joo Keng

Goh Siong Kee

Hong Aik Sai

Kee Sek Huat

Kevin Ho Kok Sun

Koh Hong Wah

Koh Xiao Hui

Kwok Ngat Khow

Lee Beng Hooi

Lee Ching Poo

Leroy Fong Lee Yong

Lim Fang Peng

Lim Hock Beng

Lim Soo Ngoh

Mok Kim Chye

Ng Ah Chong

Ng Chu Wen

Ong Mong Siang

Ong Soon Nwee

Seah Wong Chi

Sim Piah Chew

Soong Wei San

Tan Kim Biau

Tan Kim Peng

Tay Jin Ying

Toh Yew Tong Johnny

Wee Liang Chyan

Woh Kok Meng

Wong Boh Pow

Yap Eng Chong Sebastian

Yong Chin Hwee Serene

\$1,000 to \$4,999

3D Trading Pte Ltd

A Lioe & Associates Pte Ltd

Aastar Pte Ltd

Affluence Resource Pte Ltd

Alcare Pharmaceuticals Pte Ltd

Alco Sunshade Pte Ltd

Allalloy Dynaweld Pte Ltd

Allswell Trading Pte Ltd

Ang Shee General Association

B19 Technologies Pte Ltd

Beaver Contromatic Pte Ltd

Bikes N Bites Pte Ltd

Business Continuity Planning Asia Pte Ltd

Cable Care Pte Ltd

CAD IT Consultants (Asia) Pte Ltd

Chai Chee Lane LSM Organising Committee

Chai Chee Lane United Temple

Char Yong (Dabu) Foundation Ltd

Che Hian Khor Moral Uplifting Society(S)

Chee Hwan Kog Singapore

Cheng Hong Welfare Service Society

Chinmega Electric Pte Ltd

Chong Teck Siang Tng

Choong Chew Firewall Pte Ltd Winsgreen Pte Ltd

Chuan Leong Metalimpex Co Pte Ltd

CityCab Pte Ltd

DONATION RECOGNITION

CSD Sealing System Pte Ltd	Liang Tia Air-Con & Engineering Pte Ltd	Sun Holdings Ltd	Catherine Ang Lay Eng	Choo Juan Ming
CSS Consulting Engineers	Light On Electrical Services Pte Ltd	SVY Anaesthetics Pte Ltd	Catriona Yan Sze Lui	Choo Kim Teng
Di Gio Bridal Pte Ltd	Lor Koo Chye Sheng	System Motor Trading	Cecilia Kooi Leng Yee	Chow Cheong
Dinopro Technology Pte Ltd	Hong Temple Association	Tak Products & Services Pte Ltd	Chan Ah Cheng	Christopher Richard King
Dou Yee Enterprises (S)Pte Ltd	Loyang Tua Pek Kong	Tampines Chinese Temple	Chan Da Quan	Chua Choon Hong
Erecon Construction Co Pte Ltd	Lu Shang Pte Ltd	Tang's Engineering Pte Ltd	Chan Heng Kiat Cuthbert	Chua Choon Khim
F J Industrial (S) Pte Ltd	Makino Asia Pte Ltd	The Singapore Buddha Sasana Society - Sakya Tenphel Ling	Chan Kah Choo	Chua Eng Him
Fresenius Kabi (Singapore) Pte Ltd	Mangala Vihara (Buddhist Temple)	Tong Shing Contractors Pte Ltd	Chan Kwee Kee	Chua Geok Lan
Fu Sheng Fishball Pte Ltd	ME Holdings Pte Ltd	Tong Tek Buddhist Temple	Chan Lye Leng	Chua Hoon Hong
Furniture Collection Centre	Mega Express Logistics	Triple-Max Engineering Pte Ltd	Chan Pok Mun	Chua Mui Leng
Gencorp Management Pte Ltd	Melco Marine Pte Ltd	U&P Pte Ltd	Chan Soo Sen	Chua Piang Sze
Greatland Company Pte Ltd	Ming Yuan Religious Products Pte Ltd	Uni Hong Enterprise Pte Ltd	Charlie Tan Choong Seng	Chua Song Leng
Guan Ho Construction Co Pte Ltd	Ng's Technical Service & Trading	UT Engineering Pte Ltd	Chay Oh Moh	Chua Soon Kim
Halliburton Far East Pte Ltd	Niche AV (S) Pte Ltd	Velo Velo LLP	Cheah Seng Cher	Chua Xiao Ying
Hanwell Holdings Limited	OES Construction Pte Ltd	Victoes Pte Ltd	Chee Boon Hwee	Chung Song Hee
Hiap Teck Metal Co (1968) Pte Ltd	People's Park LSM Organising Committee	Workspace Pte Ltd	Chen Jun Yuan	Cindy Chow Pei Pei
Hock Seng Heng Transport & Trading Pte Ltd	People's Park Textile Centre LSM Organising Committee	Wu Long Gong Welfare Association	Chen Xian Wen	Dai Matsui
Hui Da Construction Pte Ltd	Phoon Huat & Co. Pte Ltd	Y H Furniture Trading (1998)	Cheng Kok Hong	Daniel Tan Soon Ping
Hwa Yen Buddhist Society	Poh Leng Jie Kwan Inn Buddhist Association	Yang Hua Furniture Trading	Chengliang Liu	Daungporn Boosara Wongse
Interlocal Exim Pte Ltd	Poh Teck Siang Tng	Yang Seah Coffee Powder Manufacturer	Cheong Lai Siong	Dong Shun Cheng
JerryCo Engrg Svs Pte Ltd	Poh Tiong Choon Logistics Ltd	Yangzheng Foundation	Cheong Soon Gee	Ee Kiam Keong
Jing Yang Trading	QFC Construction Pte Ltd	Yee Lee Pte Ltd	Cheong Soon Guan	Eng Hsi Ko Peter
Jit Keong Trading Co	Quintec Technology Pte Ltd	YS Lau Cardiology Clinic Pte Ltd	Cheong Wing Hong	Eng Kwee Chew
Joe Li Electrical Industries Pte Ltd	Ray Scientific Pte Ltd	Zheng Keng Engineering & Construction Pte Ltd	Cheong Wing Sum	Eni Wongso
Jurong East St24 Merchants & Hawkers LSM Organising Committee	Rico-A-Mona Bridal Pte Ltd	Aamir Hatim Nakhoda	Cheong Yong Hui Jelene	Eric Chang Siew Kwok
Kah Hong Pte Ltd	S-11 F & B Holdings Pte Ltd	Adam Peh Kian Beng	Cheong Yuen Thoe	Estate of Wee Aik Koon
KMTC (Singapore) Pte Ltd	Seiko Architectural Wall Systems Pte Ltd	Ajay Mathur	Chesed Wong Ching-Yi	Eugene Lee Ming
Kok Seng (Singapore) Pte Ltd	Sengkang Trading Enterprise	Allan Tan	Chew Cheng Hwa Jessie	Family of Late Ng Poh Seng
Kuang Chee Tng Buddhist Association	SFS Care Pte Ltd	Alvin Chew Lee Guan	Chew Chong Lim	Felisha Kisanaga
Laurels Food Suppliers Pte Ltd	Sin Hin Chuan Kee Pte Ltd	Anand Shridhar Joshi	Chew Geck Lian	Fong Lee Chin
Lee Tat Seng Polyethylene Company	Sound Trading (1975) Pte Ltd	Ang Ah Beng	Chew Lean Huat	Foo Check Boon
Leng Ern Jee Temple	Source Manufacturing Pte Ltd	Ang Chee Hui Johnny	Chew Nancy	Foo Meng Kee
	South East Aisa Hotel Pte Ltd	Ang Eng	Chew Tuan Moo	Foo Meng Kian
	South Wind Sdn Bhd	Ang Hock Hin	Chew Yang Hee	Foo Sek Kok & Family
		Ang Kok Siong	Chia Ai Ling Irene	Foo Tiang Ann
		Ang Sook Ngoh	Chia I-Ling	Fu Fang Sin
		Auw Chor Cheng	Chia Kian Meng Jackson	Gabriel Ding Teck Yong
		Beng Tin Ong	Chia Kim Yong	Gan Soh Har
		Boey Kit Yim	Chia Wei Khuan	Gary Lee Kiam Siong
		Boh Yinn Chit	Chia Yuet Hing	Gerard Er Wee Liang
		Cai Licun Edwin	Chiang Boon Tian	Gil Gerard Mangahas Ilarde
			Chiang Ging Seng	Go Kim Huay
			Chin Judy	Goh Chiu Gak
			Chin Kooi Yin	Goh Dong Hong
			Chin Yau Seng	Goh Hua Seng
			Chionh Chye Khye	Goh Kim Ann
			Chiu Kin Yuen	Goh Kok Hwee
			Chng Hwee Peng	Goh Lay Lee
			Chong Soo Keow	Goh Mee See
			Choo Hong Eng	Goh Puay Hoon
				Goh Seng Khim

Goh Tiow Seng	Khoo Boo Kit Daniel	Lee Siew Hong	Loh Chi Wei	Ng Tzer Wee
Gordon Ku	Khoo Kian Ming Andrew	Lee Soon Leng	Loh Foo Keong Jeffrey	Ng Wei Teck Michael
Guan Richard		Lee Thian Soo	Low Chor Chor	Ng Weng Pan
Han Hong Siew	Khoo Teng Peng	Lee Tiong Hock	Low Gek Chon	Ng Yang Hua
Han Hui Fong	Khoo Whee Luan	Lee Tong	Low Kong Peng	Ng Yi Xian
Han May Yin @ Ann May Yin	Khoo Yeow Lam	Lee Tuan	Low Kum Choy	Ng Yuet Yin
Han Peng Juan	Kiew Yong Seang	Lee Wai Mun	Low Phui Hiong	Ngoi Seng Piaw
Han Wee Cheng	Ko Kim Hock Kenny	Lee Wan Choy	Low Thian Ghee	Oei Khee Ghee
Harry Elias	Koh Chin Fah	Lee Wan Liang Jean	Lu Nguan Soo	Ong Beng Guek
Hassan Bin Othman	Koh Choon Kiat	Lee Yan Kit	Lu Zhi Ying	Ong Chee Wee
Hatim Fidahusein Nakhoda	Koh Hue Boo Andrew	Leo Kum Yuen	Luk Chiew Peng	Ong Keng Hock
Heng Boon Siong	Koh Keng Keong	Leon Angelique Boh Yin	Lum Chui Kam	Ong Kiam Chye
Heng Cheng Liang	Koh Kim Lee	Leong Chee Meng	Mai Ah Ngo	Ong Kwee Beng
Heng Kian Hong	Koh Kim Leng Michael	Leong Meng Soon Henry	Maria Bte Abdullah @ Mah Eng Cheong	Ong Leong Hee Danny
Ho Bee Yeow	Koh Lai Thiam	Leong Shin Loong	Mark Anthony Molina	Ong Lian Choon
Ho Keat Yew Bob	Koh Lee Kiow	Leong Siew Loong	Martin Goh Yaw Ming	Ong Liang Hong
Ho Kim Seng	Koh Sin Guan	Leow Chin Boon	Melvin Chua	Ong Nai Koon
Ho Kiu Mui Pelina	Koh Tong Huat	Leung Wei Fun	Merwin Wilfred S/O M.Wilfred	Ong Seow Yong
Ho Lai Mei	Koh Yoke Jin	Li Hung	Mery Musri Karto	Ong Soo Mun Joanna
Ho Li Wah	Kong Hung Kay	Liang Kim Poh	Michael Chang Teck Chai	Ong Teck Eng
Ho Nai Yin	Kong Wai Kin Adams	Liew Ah Kuie	Michael Ng Wee Kiat	Ong Yi Jie, Paulynn
Ho Siew Sam	Kong Yee Fong Yvonne	Liew Chih Wai	Misson Karen Veronica	Onn Eng Joo
Ho Soo Foo	Ku Swee Yong	Liew Christina	Moeez H Nakhoda	Ow Siew Har
Ho Thiam Hock	Kuah Hsian Yang	Lim Bee Suat	Mohamad Husaini Bin Supa'At	Pankaj Kumar
Ho Thiam Kiong Justin	Kueh Hwee Ping	Lim Boon Heng	Mok Yin Ping Joan	Peh Chee Keong
Ho Thye Keong	Kuek Chong Yeow Richard	Lim Chong Beng Ivan	Mok Yin San	Penny Goh
Ho Yew Leng	Kwek Eng	Lim Eng Joo	Nagano Kooji	Peter Wee Kim Swee
Hong Eng Chua	Kwek Kin Heng	Lim Fung Hwee	Nakoorsa Bin Abdul Kadir	Poelar Daniel Puiui
Hong Poh Choo	Kwik Wan Ling Regina	Lim Geat Choo	Neelesh Uppal	Poh Geok Kiow Renee (Fu Yujiao)
Hong Tuck Meng	Lai Ching Chuan	Lim Guek Lan	Neo Boon Keng	Poh Lay Ching
Hong Ying Kwee	Lai Yock Wah	Lim Hang Chung	Neo Tee Boon	Poon Chor Heah
Hor Chook Sau	Lam Chee Leong	Lim Hong Ann	Neo Yao Zhong	Pua Poh Heng
Hsia Tzung-Han	Lam Kim Mun	Lim Kim Chuan	Ng Aik Cheng	Puah Ee Von
Huen Yeen Ching	Lau Hau Sian	Lim Kok Fai	Ng Aik Hong	Quek Boon Chin
Hui Choon Wai	Lau Hong Choon	Lim Leong Keow	Ng Bee Lay	Quek Gim Pew
Huong Yew Ching	Lau Hui Cheng	Lim Meng Kong	Ng Boon Seng	Quek Joyna
Ian Phoon Kwong Yun	Lau Hui Fen	Lim Nancy	Ng Buck Chye	Quek Kwang Sieah
Iris Seet	Lau Kim Huang	Lim Peng Huat	Ng Chee Keong	Quek Sim Pin
Ivy Ng Soh Peng	Lau Kim Ping	Lim Poh Geok	Ng Chee Weng	Quik Lee Lee
Janice Tan	Lau Nyap Heng	Lim Seok Hui	Ng Cheong Bian	R Seshadri
Jeanny Png Geok Hong	Lawrence Yew	Lim Ser Yong	Ng Choh Lian	Robert Lee Hong Seng
Jenny Chong Wei Hong	Leau Ser Yang	Lim Siyun	Ng Guan Choo	Roger Chan Kum Onn
Jitul Vijaychandra Chanar	Lee Chew Kee	Lim Sok Hoon	Ng Han Meng	Saleha Bte Johari
Jo-Anne Lam May Cheng	Lee Choong Heng	Lim Thow Teng	Ng Kai Khuay	Seah Chee Hwee
Johann Heinrich Jessen	Lee Eng Thong David	Lim Tiang Khiang	Ng Kair Yeow	Seah Siew Lin Stacy
Joseph Grimberg	Lee Hood Yew Alfred	Lim Whee Kong	Ng Kam Hong	See Lian Eng
Ju Han Png	Lee Hui Leng	Lim Yan Har Joanne	Ng Kwee Choon	Seow Kwee Poh
Kang Siok Lan	Lee Johnny	Lim Yenn Ruong	Ng Lai Hong	Setiawan
Kapde Tushar	Lee Lye Sia	Lim Yeow San	Ng Lee Huat	Indrakusuma
Khew Kah Leng	Lee Mimi	Lim Yoke Lan	Ng Seng Tat	Shermela Appan
	Lee Mun Choong	Lin Jen Lee	Ng Sin Wei	Shirley Lim Puay Joo
	Lee Pheng Hui Brian	Ling Swee Leong	Ng Sok Keng	Sia Bee Leng
	Lee Poh Noy	Liu Bor Chau		Sim Kay Yin
	Lee Siew Chuan	Lo Swee Fong		Sim Lye Hee
				Sim Piah Hui

DONATION RECOGNITION

Sim Soo Yong	Tan Hua Ching Sarah Florence	Tay Hwee Pio	Tze Kong Yuen Simon	Yam Ah Mee
Sio Sit Min	Tan Hua Moy	Tay Kai Meng	Vanessa Montgomerie	Yang Yuen Tsyr Caroline
Sng Hong Soh Peter	Tan Hup Boon	Tay Kwan Hun Stephen	Veerasingam Prem Kumar	Yap Kim Yiau
Sng Siew Hong	Tan Kah Ban	Tay Peng Soon Raymond	Victor Yap	Yap Soo San
Soh Jun Wee	Tan Kay Guan	Tay Suan Ngoh	Vivien Tan Pin Leng	Yap Wei Khia
Soh Kim Chye Dave	Tan Keong Keen Andrew	Tay Wei Zhen	Wan Fook Weng	Yau Lye Meng
Soh Lee Yong	Tan Khuan Seng	Teh Tee Tee	Wang Jie Jun	Yeo Beng Hoe
Soh Phooi Weng	Tan Kok Boon	Teng Hwee Bee	Wang Li Ding	Yeo Huai Phiau
Soh Wee Leong	Tan Li Lin	Teo Beng Hock	Wawan Joswara	Yeo Kee Seng Tommy
Somasundaram Subramaniam	Tan Molly	Teo Boon Gim	Way Suk Yee Catherine	Yeo Kim Chuan
Soong Gum Chuen	Tan Puay Hiang	Teo Chor Hua	Widianto Ngadimin	Yeo Ling Foon
Su Wensen	Tan Siew Choo	Teo Hee Lian	Wilfred Ong Chiew Leng	Yeo Shu Fang
Sutharshan Kandiah	Tan Siew Tin	Teo Kee Meng	Winnie Leong	Yeo Siew Khoon
Swee Wee Siong	Tan Sin Lip	Teo Keng Chew	Wong Bor Horng	Yeo Soo Mook
Syn Keong Kong	Tan Siok Lan	Teo Kwang Peng	Wong Chee Seng	Yeo Tiam Chye
Tan Ah Leong	Tan Siong Chiow	Teo Lai Lei	Wong Chee Sun	Yeoh Khwai Hoh Patrick Nee Chok May @ Chok Mee Mee Mary
Tan Ah Wong	Tan Soo Huat	Teo Poh Li	Wong Chin Yong Mark	Yeow Aik Liang Daniel
Tan Bee Hiok	Tan Soon Hui	Teo Sally	Wong Chit Sieng	Yim Jeng Leong Steven
Tan Bee Lay	Tan Soon Meng	Teo Seok Bee	Wong Chooi Wan	Yong Chin Chin
Tan Bee Leng	Tan Teck Howe	Tey Su Hui Jeannie	Wong Foong Har	Yong Pin Yoon
Tan Chay Hoon	Tan Thong Min	Tham May Leng	Wong Khang Wee	Yong Sook Leng
Tan Cheow How	Tan Tin Kwang	Thio Syn Kym Wendy	Wong Kok Wah	Zee Chow Seng
Tan Ching Guei	Tan Yang Guan	Tien Yew Kee	Wong Kok Wing	Zheng Hao Jiang
Tan Choo Leng Christopher	Tan Yee Shu	Tin Pei Ling	Wong Liang Feng	Zheng Jinghao
Tan Ee Mui	Tan Yew Soon	Ting Cher Lan	Wong Mok Sem	Zhu Guang Xu
Tan Eng Hwa	Tan Yi Ryh	Tiong Hin Won Eric	Wong Pui Ying	Zhuang Tian Qing
Tan Fuh Gih	Tang Kian Cheong	Tiong Shu	Wong Siew Lien	Zhuang Yan Qiu
Tan Gek Gnee	Tang Mun Chee	Tit Ben Kum	Wong Sui Yee	
Tan Gek Tiang	Tang See Chim	Tjhin Pick Lan	Wong Wai Lin	
Tan Hock Keong	Tang Wee Peng	Toh Chai Lian	Wong Weng Sun	
Tan Hock Lim	Tang Yoke Sim	Toh Kim Hock	Wong Yim Mei	
Tan Hong Beng	Tay Cher Hee Jimmy	Toh Leong Hong	Woon Tek Seng	
Tan Hong Seng	Tay Choon Lan	Tong Wooi Cheen	Woon Wee Hao	
Tan Hor Keong Wilson	Tay Eng Huat	Too Chai Lai		

Kidney Dialysis Foundation would like to thank all donors for their generosity and contributions. ❤️



KIDNEY DIALYSIS FOUNDATION

MAIN OFFICE

Blk 333 Kreta Ayer Road #03-33
Singapore 080333
Tel: 6559 2630
Fax: 6225 0080
Email: enquiries@kdf.org.sg
Website: www.kdf.org.sg

HAEMODIALYSIS CENTRES

Bishan Centre

Blk 197 Bishan Street 13 #01-575/583
Singapore 570197
Tel: 6254 9514/5 Fax: 6254 9512

Chim Moh Centre

Blk 6 Chim Moh Road #01-188
Singapore 270006
Tel: 6469 1178 Fax: 6469 3511

San Wang Wu Ti Centre

Blk 333 Kreta Ayer Road #03-33
Singapore 080333
Tel: 6225 4263 Fax: 6225 2613